

THE PARKS PULSE



IN THIS ISSUE

- A Minute from the Manager
- Roads Reimagined
- Visionaries for Veterans
- Grand Re-Opening Celebration at Pixley Park
- Adopt An Arbor Program
- Sponsorship Spotlight

A Minute from the Manager

Welcome to the inaugural issue of the Tulare County Parks newsletter, **The Parks Pulse**.

In this newsletter, you'll find updates on the improvements happening throughout our Parks, details on how the community is getting involved, sponsorship opportunities, and information about upcoming events.

At Tulare County Parks, our mission is to provide the public with welcoming environments for recreational opportunities while being dedicated stewards of these

treasured spaces. Staying true to this mission, we've been hard at work across our eleven County Parks, completing numerous projects that enhance the experience for our community and Park patrons. From newly renovated picnic areas to trail and pavement improvements, these efforts reflect our ongoing commitment to preserving and improving the natural spaces that makes our Parks special.



ALBERT CENDEJAS

Pond Perfection

A Refreshing Revitalization



Have you seen the newly revitalized pond and pathway at Mooney Grove Park? This project was made possible by funding through the Prop 68 Per Capita grant and local County match. These upgrades enhance the beauty of our outdoor spaces and create a serene gathering spot for families to enjoy nature. As part of our commitment to improving and preserving our Parks, we invite you to come take a stroll, try some fishing, and soak in the scenery.

Roads Reimagined: The Re-Paving of Cutler Park



We are pleased to announce a long-awaited road repaving project at Cutler Park, which was made possible by the American Rescue Plan Act (ARPA) and local County funds. The newly paved roads improve access and travel through the Park, which has long been a popular place for disc golf, horseshoes, picnics, and children enjoying the playgrounds. Many of these amenities have been recently renovated. In addition, the Park continues to be a popular place for running events. The completion of this project ensures that Cutler Park will continue to be a cherished space for citizens of Ivanhoe, Visalia, and the surrounding areas!

FUN FACT: Cutler Park was gifted to Tulare County in 1919 by John J. Cutler, Jr. and his wife, Mary. He gave the gift as a memorial to his parents, John and Nancy Cutler, pioneer settlers and leading citizens of Tulare County, requiring that "Said lands and premises shall forever thereafter be named...Cutler Park, and "The land shall be used and maintained forever by the County as a public Park and public pleasure ground, and for no other purpose." The land consisted of approximately 70 acres of splendid oak woodland along the St. John's River.

Visionaries For Veterans



From left to right – Lizbeth Birelas, Cynthia Noriega, Erika Garcia, Sarai Vasquez and Kaylan Rodriguez

When the Park Manager envisioned a mural for the stage at Ledbetter Park, he knew exactly who to involve to bring it to life. Conversations began with Elaine Saucedo from Cutler High School, and from there, the concept began to take shape. Five exceptionally talented students (listed above) were selected to bring the mural to fruition, dedicating around two weeks to the project. The finished mural serves as a powerful tribute to the courage, dedication, and sacrifices of our armed forces and veterans. It is an inspiring addition to the Orosi community, and we are proud of the young artists who have shared both their remarkable talent and their heartfelt tribute with us.

Grand Re-Opening Celebration at Pixley Park



We recently celebrated the much-anticipated grand re-opening of Pixley Park, a focal point for gatherings in the community of Pixley! Thanks to the funding from the American Rescue Plan (ARPA), we were able to make a range of exciting improvements—refreshing picnic areas, and newly paved roadways, enhancing the Parks infrastructure. These upgrades not only improve the Park's accessibility and appeal but also create inviting spaces for everyone to gather and enjoy. It was a truly memorable day, and we're deeply grateful for all the community involvement, and to all who joined us in celebrating this wonderful addition to our neighborhood. Here's to many more joyful moments in our newly revitalized Park!

Adopt an Arbor Program



Did you know that the Tulare County Parks Adopt an Arbor sponsorship opportunities are available for businesses and individuals alike?

The Adopt an Arbor Sponsorship program includes the following benefits:

- The sponsorship covers a three-year term
- A prominent sign placed on top of the arbor showcasing your business name, family name, or to memorialize a loved one.
- An annual reservation for the arbor sponsored



Sponsorship donations are as follows:

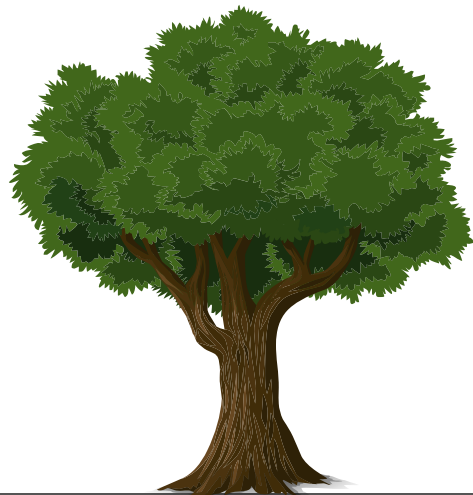
- Small Arbor Sponsorship - \$1,000
- Medium Arbor Sponsorship - \$2,000
- Large Arbor Sponsorship - \$3,000
- Extra Large Arbor Sponsorship - \$5,000

For more information on sponsorship opportunities, please contact us at 559.205.1100

Sponsorship Spotlight

THANK YOU TO OUR NEWEST PARK SPONSORS!

- Calgren Renewable Fuels - Arbor (Pixley)
- Visalia Breakfast Lions - Arbor (Mooney Grove)
- Visalia Kiwanis Club - Arbor (Mooney Grove)
- American Legion Sierra Post 785 - Arbor (Mooney Grove)
- Diana Davies - Arbor (Mooney Grove)
- Victoria Jean Lynn Worrell Memorial Tree (Mooney Grove)



Follow us on Instagram
@tularecountyparks



Visit us on the Web
www.tularecountyparks.org



Follow us on Facebook
@tularecountyparks